

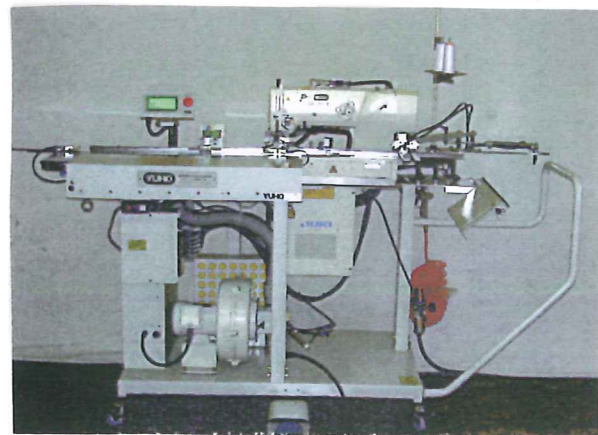
YUHO



YUHO

NEW 『 E 』 TYPE
MODEL U-2604-BH/AUT
MODEL U-2607-LK/AUT

NEW



MODEL U-2604-BH,



MODEL U-2607-LK,

[SPECIFICATIONS]

- FABRIC LENGTH (mm) 700mm
- LOADING (mm) 200mm
- POWER SUPPLY 24V/DC
- AIR SUPPLY 5kg/cm² 3ℓ/min
- FLOOR SPACE L/1050 x W/350 x H/1200mm

YUHO SEWING MACHINE CO., LTD

5-chome 3-1, Biwajima,
Nishi-ku, Nagoya,
Tel: +81-52-522-6276
Fax: +81-52-531-9270
e-mail: yuho@yuhomac.com
URL: <http://www.yuhomac.com>

ROBOT LOADER
INNOVATIONALLY DESIGNED ROBOT LOADING MACHINES ARE
DEBUT ON TO U-2604-BH BUTTON HOLE FEEDER &
U-2607-LK BUTTON SEWING INDEXER

FULL-AUTOMATIC LOADING "SHIRTS FRONT-BODY" TO U-2604-BH/
AUT & U-2607-LK/AUT---PERFORMS AS "ROBOT LOADER" FROM
"AUTO CYCLE SEWINMG" TO "STACKING"



YUHO SEWING MACHINE

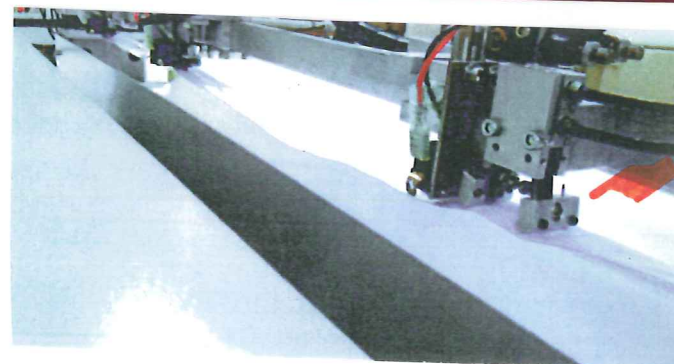
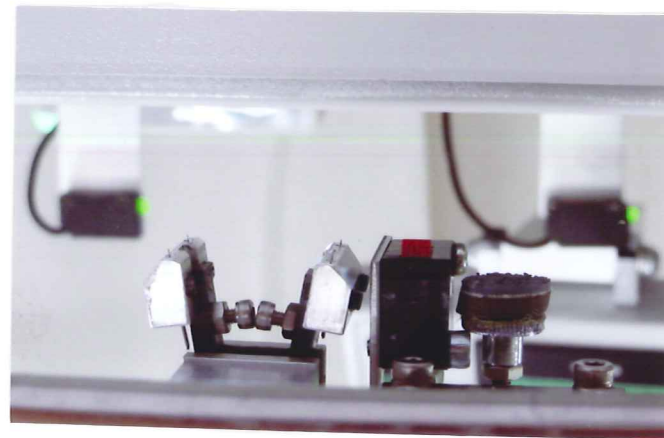
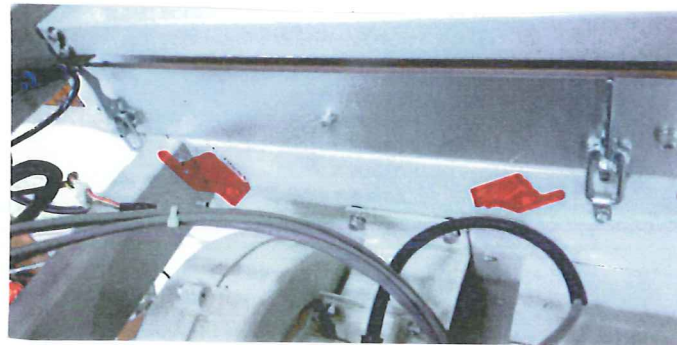
NEW 『 E 』 TYPE
MODEL U-2604-BH/AUT
MODEL U-2607-LK/AUT



removable "AUTO-LOADER" from "MACHINE" is available with single handling----this is highly advantageous to use for the various patterns but for small lot.

AUTO-FEEDING WITH 3-CLAMPERS

Fabrics aligned on the Loader accurately are allowed clamped completely with "3-CLAMPERS" and supported with "EXPANDER" to Right/Left. Completely "expanded fabrics" are fed on automatically.



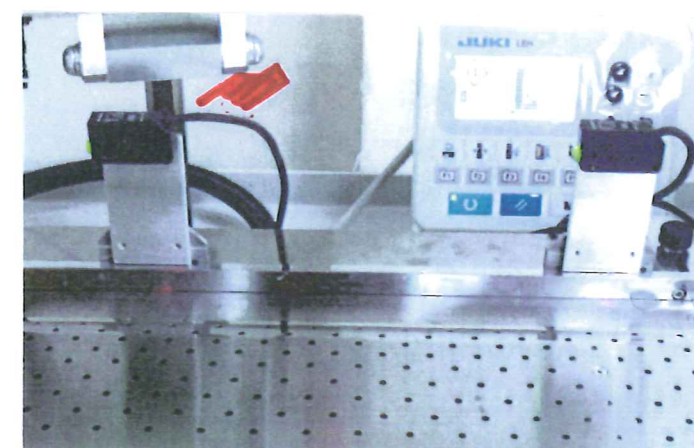
3-FABRIC-EDGE SENSORS

with Fabric-Edge Detecting Sensor, Fabric is fed to the accurate position automatically until Sensor detects on. Fabric-Edge Sensor is removable along to the Gauge freely.



AUTO-FEEDING PROMISES HIGH-OVERLAPPED SEWING CYCLE

with Auto-Feeding, Sewing Cycle Time can be saved extremely with Auto-Feeding.



EMERGENCY ALARM LAMP

when Bobbin Thread runs short, Emergency comes out, "Warning Lamp " alarms automatically.