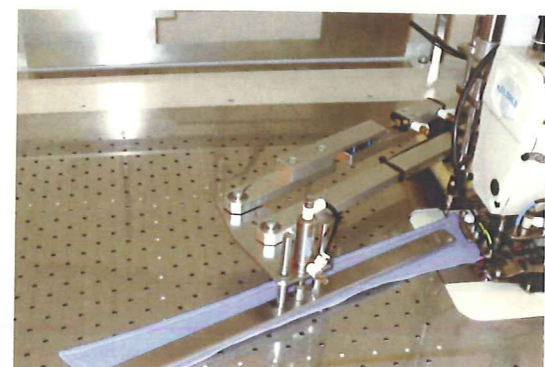


MODIFIED STACKER

Collar piece is fed to the Stacking position and stacked on completely. Collar pieces stacked on is picked out automatically when collars are counted out as designed.



YUHO

MAIN DEVICE

- ★ FLOATING AIR TABLE
- ★ "LED" TOUCH PANEL
- ★ COLLAR LOADING SETTER
- ★ AUTO COLLAR CORNER STOPPER
- ★ COLLAR AUTO FEEDER
- ★ COLLAR EDGE-GUIDE
- ★ FEEDING, TURNING, DRAWING AIR
- ★ NEEDLE CORNER HALF-DROPPING
- ★ 3 FIBER SENSORS
- ★ AUTO COLLAR TURNING
- ★ STACKER
- ★ STACKER COUNTER
- ★ AIR GUN
- ★ T.B.D.

SPECIFICATION

- MACHINE HEAD: JUKI DLU-5409N-7
- STITCH MARGIN: 0.8~9.9mm
- SEWING SPEED: HIGH: 4,500rpm
MID: 850rpm
LOW: 400rpm
MID: 850rpm
- NEEDLE DB x 1 #9~#16
- COLLAR LENGTH: 550mm (max)
- COLLAR ANGLE: 30°~120°
- TABLE HEIGHT: 920mm
- POWER SUPPLY: 200V/AC 600W
- AIR SUPPLY: 5kg/cm² 30N/min
- FLOOR SPACE: L/1450 x W/1100 x H/1250mm

DAILY OUTPUT

- 3 UNITS per ONE PERSON
4,800pcs per 8 H
- with HEAT PRESSER
per ONE PERSON 1,000pcs per 8 H

YUHO SEWING MACHINE CO., LTD.

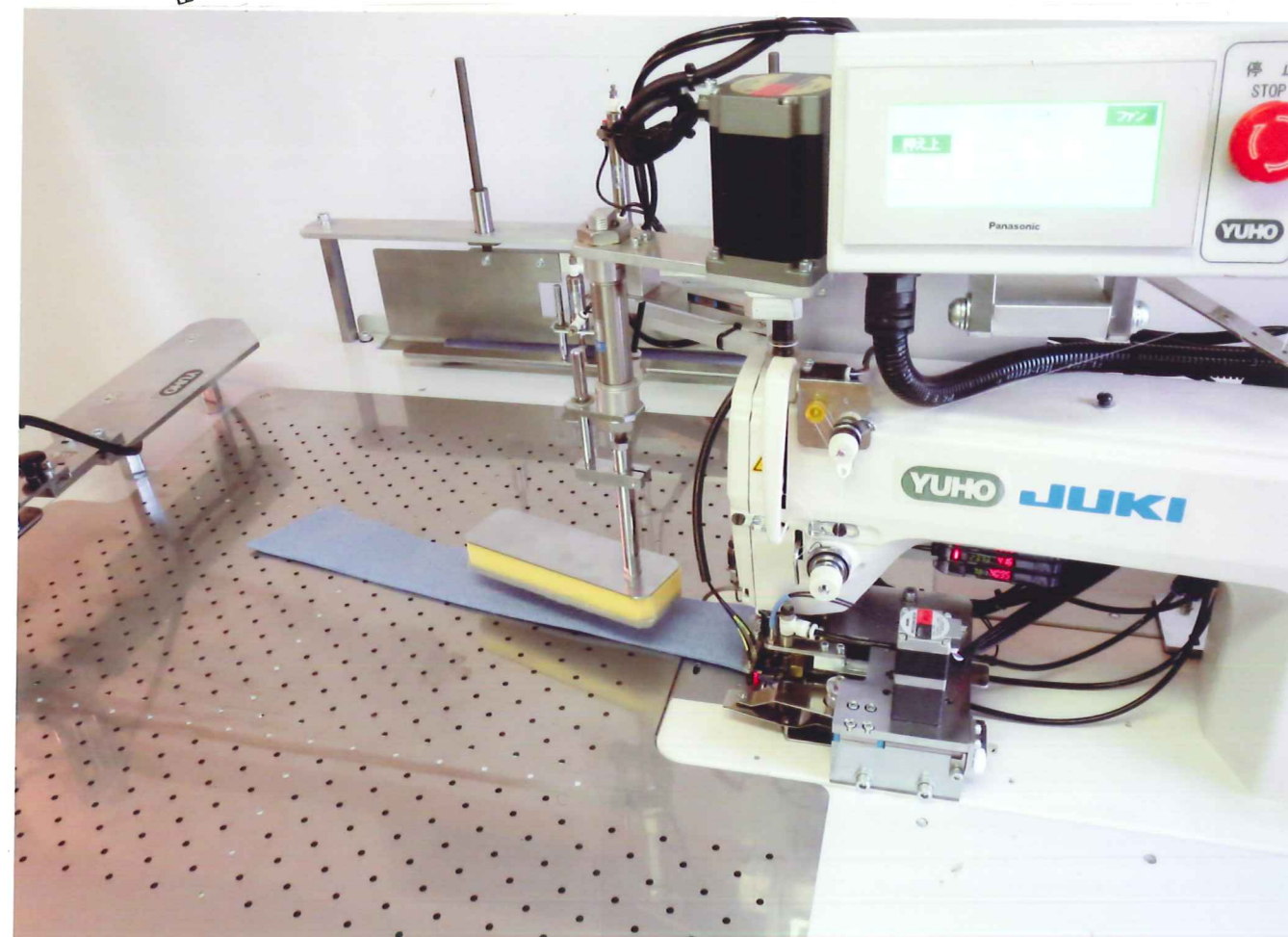
5-chome 3-1, Biwajima,
Nishi-ku, Nagoya,
Tel: +81-52-522-6276
Fax: +81-52-531-9270
e-mail: yuho@yuhomac.com
URL: <http://www.yuhomac.com>

YUHO

NEW 『 E 』 TYPE

NEW SHIRT COLLAR AUTO STITCHER
MODEL U-3402-E

NEW



AN ACCURATE AUTOMATIZED INPUTTING OF THE COLLAR ANGLE, AND STITCH MARGIN AND ACCURATE COLLAR CORNER STOPPING ARE ALLOWED AUTMATICALLY !!

JUST WITH "LED" TOUCH PANEL, AN AUTOMATIZED COLLAR ANGLE AND STITCH MARGIN SETTING IS AUTOMATIZED FLEXIBLY WITH PULSE MOTOR !! 40 PATTERNS AND STITCHING MARGIN WITH LARGE VARIATION IS ALLOWED FLEXIBLY !!



YUHO SEWING MACHINE

NEW

NEW [E] TYPE

NEW SHIRT COLLAR AUTO STITCHER
MODEL U-3402-E



MODIFIED TABLE FLOATING AIR PROMISES CONSISTENT TOP-STITCHING

Newly modified Table Floating Air supports smoothy Collar Corner Turning even such soft knit fabrics.

With powerful Pulse Motor, an accurate Corner Stopping and automatized Collar Stitch Margin Grading are allowed completely.

Newly modified Stacker allows a lot of Collar pieces stacking and picking up accurately, .

ORIGINALLY DESIGNED EDGE-GUIDE

with Edge-Guide and Machine Presser, Collar is guided and held down completely. The finest tension is adjustable according to the thickness, the Patterns optimumly.



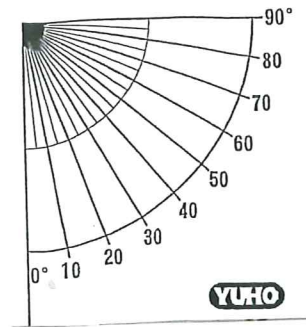
AUTOMATIZED CORNER ANGLE & STITCH MARGIN SETTING

with Angle Graduator, available to input the designed Collar Angle from **30°~120°** by **1°** unit
Color Angle can be graduated automatically
Stitching Margin can be graduated from **0.8~9.9mm** by **0.1 mm** unit automatically.



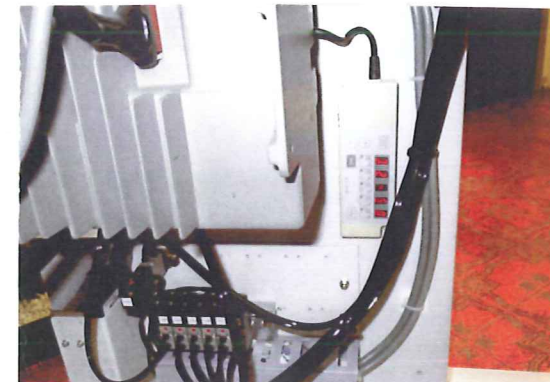
AUTO SHIRT COLLAR FEEDER 3 STATION SYSTEM

Collar loading is just enough on the Setting position.
Feeding, Stitching and Stacking are sequenced full automatically.
Loading is allowed freely while Sewing cycle is running.
Feeding starts when Stitching ends automatically.
Stacking is synchronized with after Sttiching



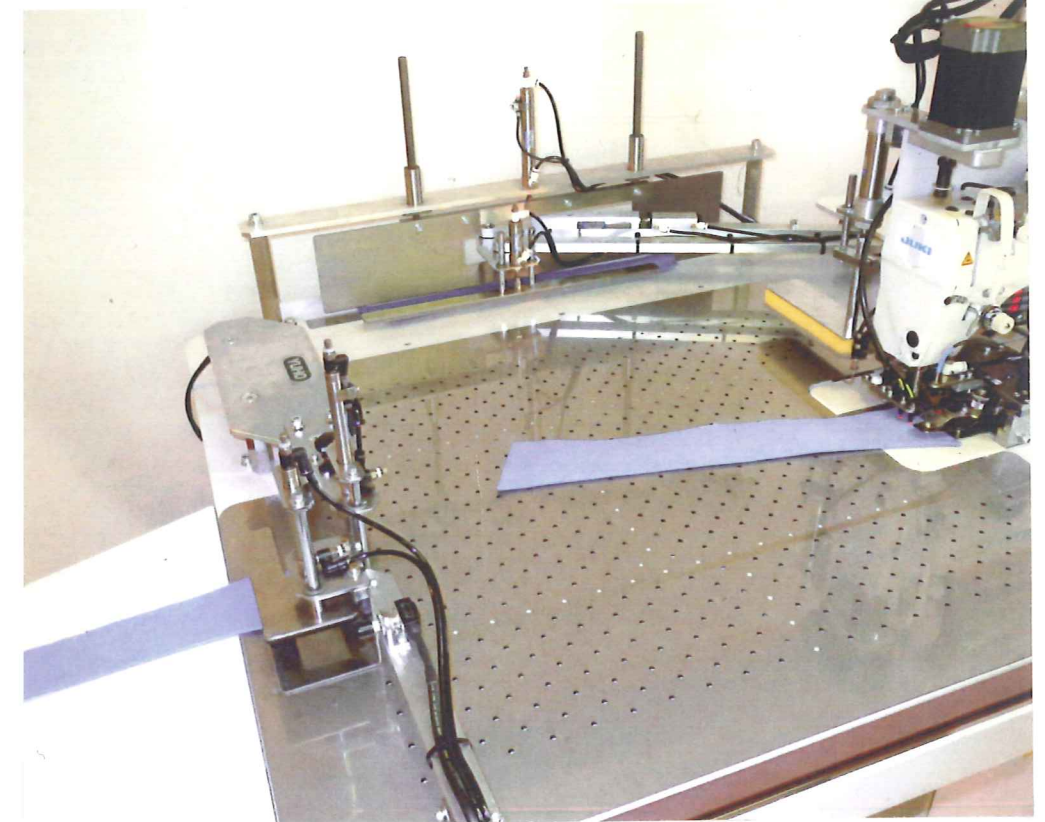
NEEDLE HALF-DROP STITCHING

Needle Corner Stopping Position is required into partially---in half or quarter dropping position ---.
Needle Half-drop Stitching Mode can control dropping position strictly.



3 SEWING SPEED VARIATION

For consistent Top-stitching, Sewing speed is variable . . .
LOW speed ---Sewing Start & End, Corner-End
MIDDLE speed---Collar Corner
HIGH speed---Collar 2'nd long corner
L-M-H 3-speeds is adjustable freely.



"LED" TOUCH PANEL CONTROLLER

with "LED" TOUCH PANEL, Sewing Mode Selection, Pattern Inputting is allowed simply.
Programmable **40** Patterns to the Collar Angles, Stitch Margin is allowed freely, simply.

enter Collar Angle by 1 available **30°~120°**
enter Stitch margin by 0.1mm available **0.8~9.9mm**

enter Sewing End Timer available an accurate stopping when Sewing pitch, Speed is varied
1'st corner Stop---control by 0.1mm
2'nd corner Stop---control by 0.1mm

