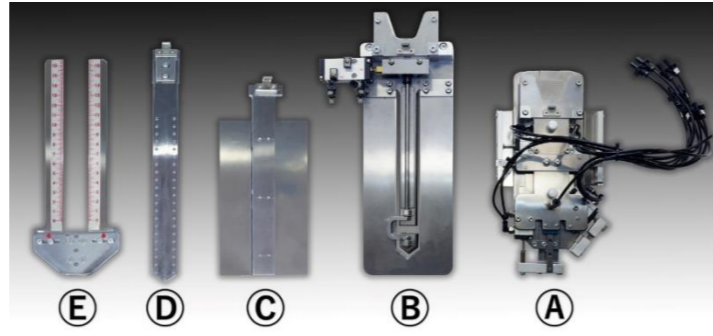


Optional Accessories

★ Replacement Gauge Kit for Upper Placket

(Including one set of custom pattern data for a pair of Left and Right sleeve plackets)

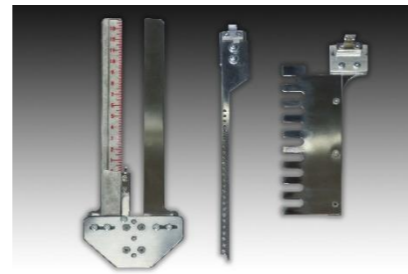
*The U-4003 is shipped with one complete set of the gauge kit contains ① to ⑤. The price of extra gauge kit may differ case by case, depending on the shape of the new sleeve placket and the necessity whether ① to ⑤ components need to be replaced entirely or partially.



★ Under Placket Attaching Tool Kit

Just replacing a few components allows you to transform U-4003 as the under sleeve placket setter.

*Please note some designs of under placket may require additional manual operation.



Specifications

★ Sewing Head	JUKI DDL-9000B (1-needle lockstitch, direct-drive with thread trimmer)
★ Needle Stroke	35 mm
★ Max. Sewing Speed	5,000 rpm
★ Needle	DP x 17 #11
★ Sewing Pitch	Variable (depends on feed speed and sewing speed)
★ Sleeve Placket Length (mm)	Mx. 180 mm
★ Sleeve Placket Width (mm)	20 mm ~ 30 mm
★ XY Pulse Feed Motor	
★ Feed Speed	Variable
★ # of Pattern Memory	Max. 10 sets (Left/Right)
★ Table Height (mm)	930 mm
★ Power Consumption	200 V / AC 650 VA
★ Air Consumption	0.5 MPa 5 litter / min
★ Dimensions (mm)	W 1,350 x D 900 x H 1,300 mm

Configurations

- ★ Pattern Gauge 1 set (incl. a pair of pattern data for Left and Right sleeve plackets)
- ★ Vertical-Up/Down-Type Folding Mechanism
- ★ Reversible Crank
- ★ Overlapping Workflow (Setting · Folding & Stitching)
- ★ Bobbin Thread Backtensioner Technology
- ★ Needle Guard Hook
- ★ Bobbin Counter
- ★ Powerful Vacuum Suction Table with Inverter
- ★ LCD Touchscreen
- ★ Stacker
- ★ T.B.D. (Thread Breakage Detector)
- ★ 3 x LED Marking Light

Daily Output

- ★ Under the condition of single placket, 170 mm length:
 1 cycle 13.5 sec.
 1,500 seams / 8 hour (with 20% allowance)



Bundled Software “FP Data7”

Connecting a PC with this software installed and YUHO automatic sewing machines by a USB cable enable users to report the current status of user's YUHO machine quickly and precisely. This procedure makes YUHO easier to provide quick and appropriate customer support remotely.



YUHO SEWING MACHINE CO., LTD.

5-3-1, Biwajima, Nishi-ku, Nagoya 451-0053, Japan

Tel: +81-52-522-6276

Fax: +81-52-531-9270

Email: yuhomac.com

<http://www.yuhomac.com>



The One and Only Surface-Side Stitching System

Surface-side stitching system: Superior-quality top-stitch is guaranteed, and allowing operator **matching plaid** visually.

Eliminating the heat-press-folding preprocess: Allowing to handle **new high-tech materials** that are sensitive to heat.

Onboard marking lights: Supporting quick and accurate material setting work by the operator, enabling of stitching on the hiding of raw edge at the reverse side of the sleeve placket automatically and accurately.

Compact yet highly productive machine design: Realizing the **overlapping workflow** (loading/folding process and stitch sewing process) and three types of running modes: Left only, Right only, and L/R Alternate.

Coverage of the under placket attaching process: with the optional Under Placket Attaching Tool Kit.



YUHO SEWING MACHINE



Full-Auto Sleeve Placket Setter
(Under Placket Attaching Tool Option Available)
Model U-4003-E



Exquisite seam quality thanks to the Surface-Side Stitching System

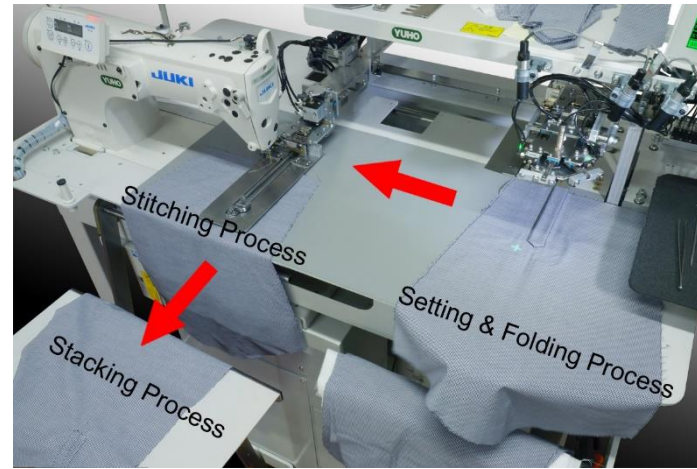
YUHO's acclaimed Sleeve Placket Setter U-3506-E/PS realized to automate the procedures of attaching sleeve placket: 1. Folding, 2: Attaching by topstitching. With newly developed Surface-Side Stitching System as well as YUHO's proprietary Bobbin Thread Backtensioner Technology and Needle Guard Hook, the latest model of Sleeve Placket Setter U-4003 realized the unparalleled quality of the 0.8 mm seam allowance top-stitch without hitch stitch.



Overlapping workflow accelerates productivity

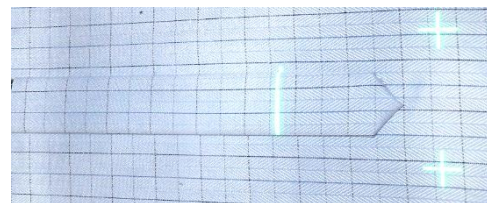
On the right area of this machine's table, 1) setting the materials → 2) automatic folding is performed. Then, 3) transporting material to the sewing head (left side of the table) → 4) stitching material is performed. The operator can set the next materials on the table's right area while transporting and stitching the previous material. It means one unit of this machine enables [setting + folding] and [stitching] as overlapping workflow, and the productivity of two conventional machines can be achieved with just one unit. Despite its minimum-footprint-design (table size: 750 x 1,300 mm), it reserves a space of 500 mm between the material setting area and the sewing area, securing the comfort of operation even when handling larger materials.

After the stitching process, the materials are automatically piled up by the stacker device.



Ready for the materials with plaids

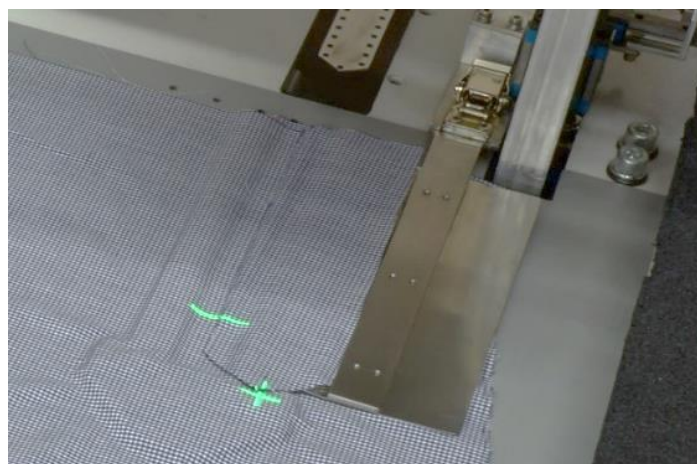
Thanks to the surface-side stitching system, the machine now allows operators to visually check



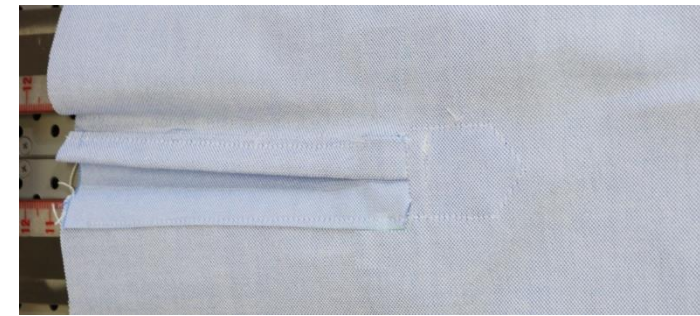
the matching of plaid pattern, which was not possible with the reverse-side stitching method, and plaid matching can now be realized. (Note: Plaid matching requires a longer cycle time, which causes less productivity. It also requires the plaids are accurately matched between sleeves and sleeve placket pieces at the cutting process.)

By pressing **PLAID** on the LCD touchscreen, the "plaid matching" mode is activated. Referring to the marking lights, the operator can adjust the sleeve piece and sleeve placket piece so that the plaid is precisely aligned. Right after the folding device folds the sleeve placket piece, the operator can double-check the matching of plaid patterns.

Marking lights assist positioning of the material

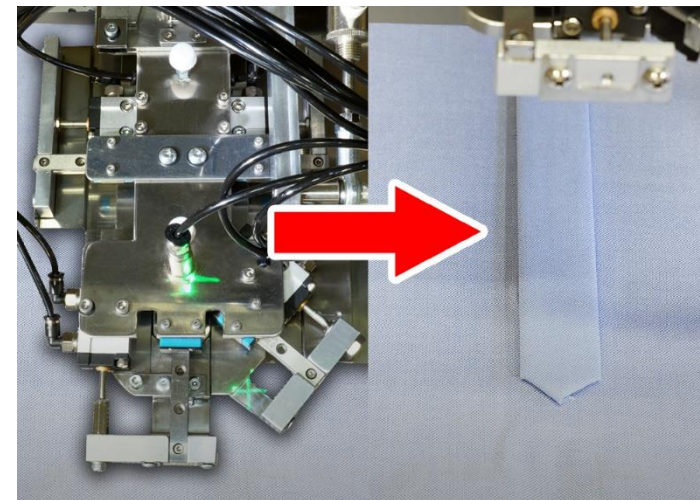


Equipped with 3 marking lights for positioning, the operator can place the material easily but accurately.



Process sleeve plackets of both left- and right-sleeve with L/R alternate operation mode

No need to have two sets of U-4003 for the left and right sleeves. This machine not only supports the left- and right-sleeves with just one unit but also has three operation modes: **[left-sleeve continuous]**, **[right-sleeve continuous]**, **[left / right alternate]**. Those three modes are instantly switchable on the touchscreen.



Advantage of folding without heat pressing

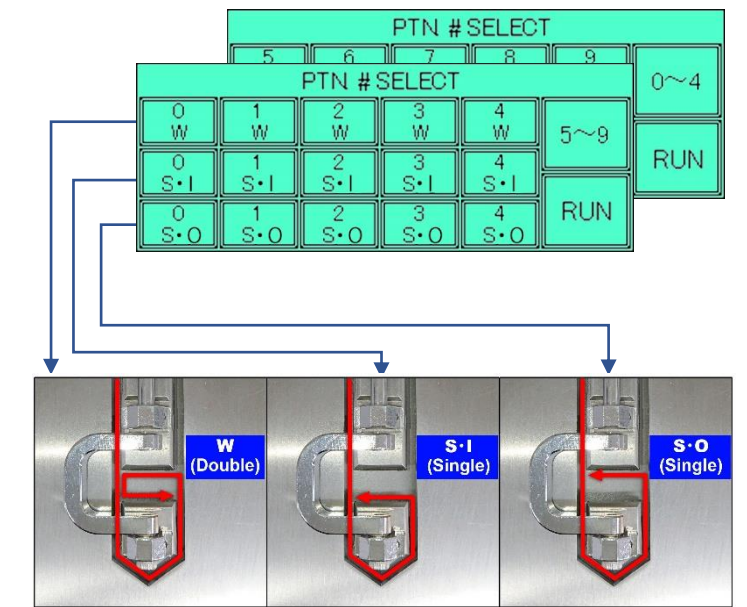
YUHO's acclaimed U-3506 performs folding and ironing on just one side of the sleeve placket piece before setting it on a sleeve piece. The U-4003 succeeded in automating everything. Since all sides are automatically folded without ironing, the U-4003 can even handle the sleeve plackets made of new synthetic materials that are heat sensitive without any problem.

Intuitive touchscreen operation



You can easily switch the operations between the right sleeve and the left sleeve, make corrections of sewing patterns or seam allowance etc., instantly by touching the LCD.

On the LCD, touch the position on the graphic where you want to adjust the sewing pattern. The on-screen numeric keypad will appear, and you can visually modify the sewing pattern by pressing + or - and entering a number (0.1 mm unit). Besides, up to 10 sewing patterns can be stored and instantly recalled. Each pattern can cover the variations incl. left / right, W (double), S·I (single inside), and S·O (single outside). (Custom sewing pattern data and custom gauge are always provided as a pair.)



The seam allowance is set 0.8 mm as default, and fine adjustment is possible.

Besides, various parameters of the Thread Breakage Detector, Stacker, etc., can be easily set on the LCD touchscreen.

Carefully designed for the ease of gauge replacement and maintenance

Its user-friendly design allows users to gauge replacement and sewing head maintenance quickly and instantly, without requiring any tools. It contributes to keeping the total running cost lower without sacrificing productivity at the production site. (Please note that the replacement of optional under placket gauge kit requires using a hexagon wrench as an exception.)

The sewing test button is provided for the purpose of checking /adjusting the quality of seam lines, allowing the operator to test the sewing head independently.

Energy saving conscious

Lower energy consumption is realized thanks to the incorporated direct-drive, high-speed, thread trimming sewing head. The powerful vacuum suction functionality is equipped with an inverter circuitry that allows strong suction only when necessary and keeps the low-noise operation at stand-by mode.