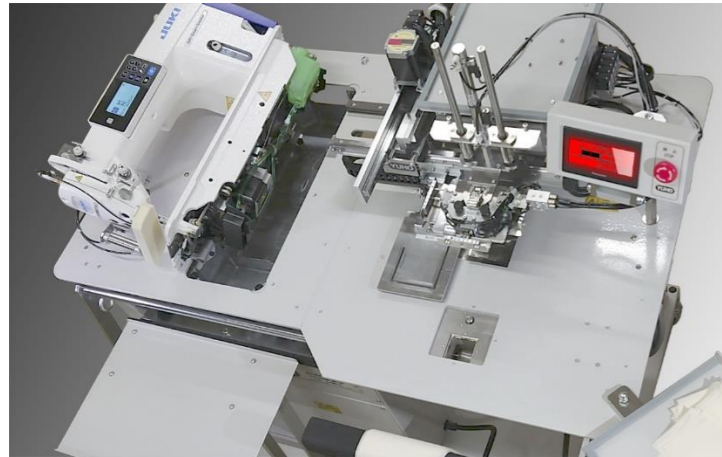


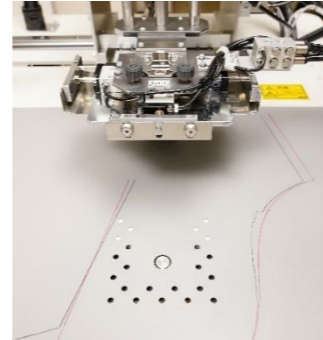
Maintenance Ease, Handy Tilting of the Sewing Head

U-4304 has been designed with the utmost consideration for maintenance and inspection. For example, when performing maintenance on the sewing head, the presser pat automatically moves to the right side, allowing the sewing head to be tilted instantly. Furthermore, we have thoroughly reviewed the ease of use of the automatic sewing machines in various daily maintenance situations, such as sewing tests using only the sewing head and setting and checking the operation of each device installed in the U-4304.



Vacuum Suction Functionality in the Material Loading Area

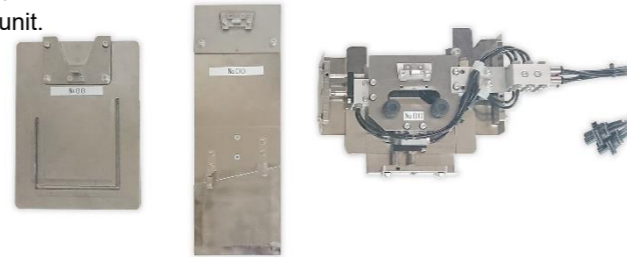
A vacuum suction device installed on the table surface in the material setting area stabilizes and ensures the folding operation of pocket pieces.



Extra Pattern Gauge Set + Pattern Data (Optional)

* YUHO tailor-makes all pattern gauges and pattern data based on each customer's specifications.

* Gauges can be replaced with one touch, and pattern data can instantly switch on the U-4304. Up to 20 pattern data can be stored in one unit.



【 Specifications 】

★ Sewing Head	JUKI DDL-9000C (Direct Drive, High-Speed, 1-Needle, Lock Stitch)
★ Sewing Speed	4,000 rpm
★ Needle	DP x 17, DP x 134 #11~14
★ Sewing Size	W 100 mm x D 120 mm
★ Needle Stroke	35 mm
★ # of Pattern Memory	20
★ X-Y Feeding System	Stepping Motor, 2 x Spindle
★ Distance between Material Loading Area and Sewing Area	500 mm
★ Power Consumption	200 V / AC 510 VA
★ Air Consumption	0.5 MPa, 10 n/min.
★ Dimensions	W 1,200 x D 900 x H 1,500 mm

【 Daily Output 】

★1 cycle 12 sec. 1,950 pcs. / 8H. (20% allowance)
 (The figures/results may vary depending on the pocket size, skill of machine operator and other factors.)

Bundled Software "FP Data7"



Connecting a PC with this software installed and YUHO automatic sewing machines by a USB cable enable users to report the current status of user's YUHO machine quickly and precisely. This procedure makes YUHO easier to provide quick and appropriate customer support remotely.

【 Configuration 】

- ★ LCD Touchscreen
- ★ Vertical Up/Down-Type Folding Device
- ★ Table with Vacuum Suction (with Inverter)
- ★ 2 x Stepping Motors for X-Y 2-Spindle
- ★ Needle Foot Presser
- ★ Stacker with Swing Pat
- ★ Thread Breakage Detector (T.B.D.)
- ★ Bobbin Thread Counter
- ★ Casters (2 x front wheels: with brake)
- ★ Air Duster Gun
- ★ The price includes one set of custom gauge and pattern data.

In the interests of product improvement, appearance and/or specifications are subject to change without prior notice.

 **YUHO SEWING MACHINE CO., LTD.**
 since 1968

5-3-1 Biwajima, Nishi-ku, Nagoya, 451-0053
 Tel: 052-522-6276
 Fax: 052-531-9270
 Email: yuho@yuhomac.com
 URL: <http://www.yuhomac.com>



YUHO's Coin Pocket Setter, which boasts the same superior functionality as YUHO's acclaimed Pocket Setter U-4203 and executes high-quality coin pocket attaching to pants pocket bags, is now available with the latest lockstitch digital sewing head onboard.



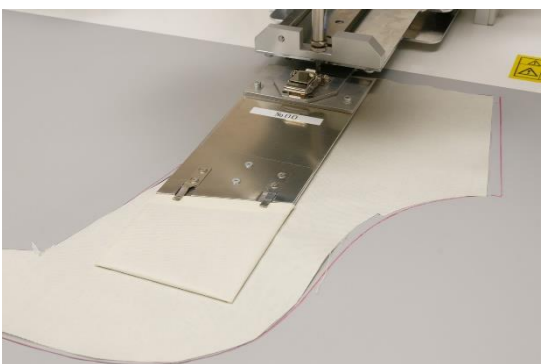


Coin Pocket Setter

MODEL U-4304-E

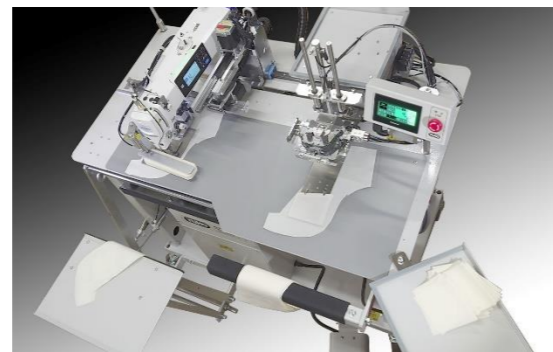


De-skilling and High-Efficiency Production



Set the pocket bag on the table surface and place the pocket piece on the slide plate. As soon as you press the start pedal, the pocket piece's three sides are automatically folded accurately with lightning-fast speed. Then, it is immediately transported to the area under the needle. (This allows you to completely omit the separate folding process using a heated iron.) The pocket piece is sewn with beautiful edge stitches without protrusions at each corner. Finally it is stacked neatly by the stacker with a swing pat. Such a 3-position configuration:

setting area, sewing area, and stacking area: is the key to the overlapping workflow and high productivity as the U-4304 operator can set the following material simultaneously while the sewing head or stacker device is handling the previous material, resulting in highly efficient production.

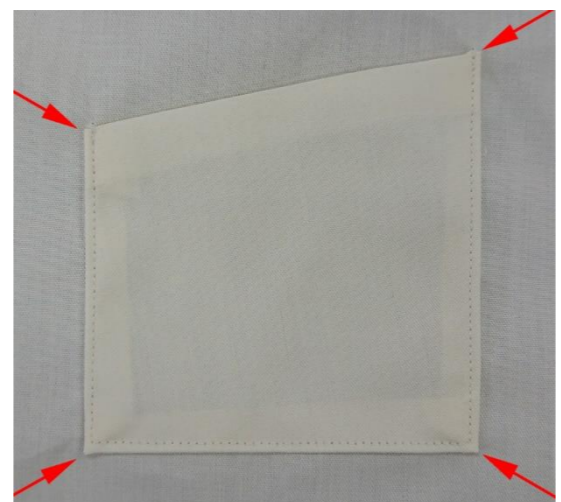


High Functionality, High Quality

The state-of-the-art JUKI DDL-9000C is retrofitted for the U-4304's sewing head. Its high and long arm design ensures a wide sewing area and a 500 mm interval is provided between the material loading area and sewing area to create a spacious working environment.

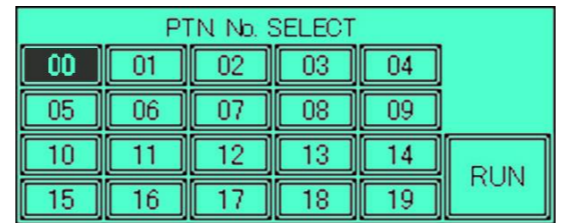
The pocket piece folding mechanism employs a method in which it moves vertically up and down rather than a swing type. Coupled with the adoption of YUHO's proprietary pocket piece folding mechanism that eliminates the protrusion of the pocket corners, it is a high-performance coin pocket attaching machine comparable with YUHO's acclaimed and representative product U-4203 Pocket Setter.

Eliminates Corner Protrusions



YUHO's pocket folding device (proprietary technology) beautifully folds each corner, achieving perfect corner finishes with no protruding parts.

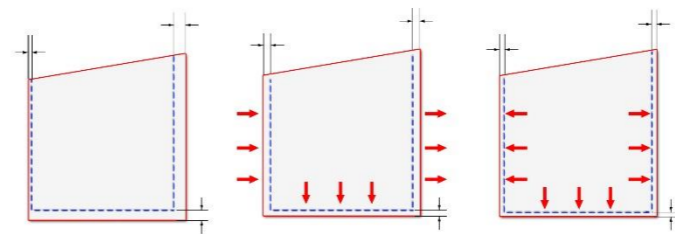
Easy Operation of Multi-Functions with LCD Touchscreen



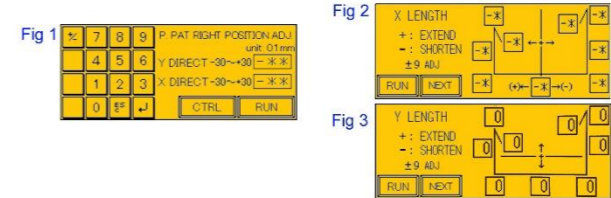
Up to 20 custom sewing pattern data can be stored on the U-4304 and instantly recalled or switched using the touchscreen. Each pattern data is always handled together with a dedicated pattern gauge. The gauge replacement procedure always occurs

when switching pattern data. This operation is designed to be simple and quick so that the production sites handling coin pockets with various shapes and sizes can minimize idle time.

Each pattern gauge and pattern data is tailor-made based on the detailed specifications of each coin pocket, such as the width of the edge stitch, provided by each purchaser. However, due to variations in the quality or cutting accuracy of materials, sometimes the sewing results may vary despite the same dimensions, shape, and pattern gauge. As a result, operators may sometimes need to adjust the pattern data. In such cases, U-4304's data correction function allows you to register additional correction values in 0.1 mm step for each pattern data while leaving the original pattern data unchanged. In addition, for example, in a case where the corrected value for the edge stitch margin differs significantly between the left and right sides, instead of inputting a large number as the correction value, first adjust the position where the presser pat catches the material, and then make the correction values. Consequently, the correction values are kept small, resulting in a more flexible operation.



When it is necessary to input bigger values for correction because the seam margins of the edgestitch vary and are uneven on the left, right, and bottom sides: Before entering correction values and correcting the sewing line, use the "P PAT RIGHT POSITION ADJ" screen (Fig 1) to adjust the position where the presser pat seizes the material so that the seam margins at left, right, and bottom as even as possible. Use the correction screens: "X LENGTH" and "Y LENGTH" (Figs 2 and 3) to carefully enter the correction values for each left, right, and bottom sewing lines.

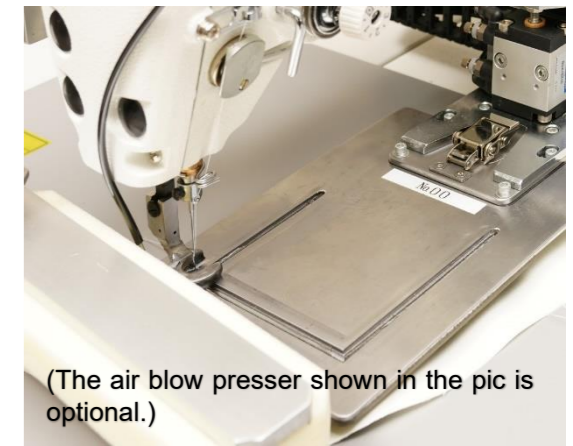


Equipped with functions to minimize material loss and idle time by automatically stopping the operation when thread breakage occurs or when the amount of bobbin thread remaining is low. These settings and adjustments can be easily made on the touchscreen.

Needle Presser Foot

The needle presser foot is provided to prevent fluttering and slippage of materials during sewing. Thanks to the needle presser foot, which steadily supports the materials, the materials sent to the needle are sewn with beautiful edge stitches on three sides (left, right, and bottom) at high speed in just 3 sec. It boasts high performance and excellent

de-skilling characteristics, allowing beginner operators to sew excellent edge stitches with higher precision and a more beautiful appearance than experienced workers.



(The air blow presser shown in the pic is optional.)

Stacker with Swing Pat



U-4304 automatically sews coin pockets onto pocket bag material and rotates it 90 to 120 degrees. Its stacker device with the turn-over bar neatly aligns and stacks the materials. This stacker with the swing pat allows significant overlap between the material setting/folding process and the sewing and stacking processes, tremendously contributing to higher productivity and efficiency.

